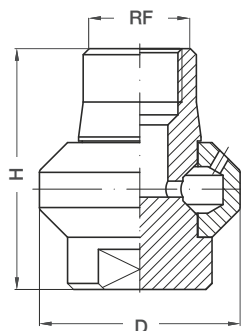


SINGLE AXIS HEADS

REACTION DRIVE

UBB



UBB heads are specially designed for applications where chemical attack from strong acids is to be expected, or when contamination to the product being handled is to be excluded, and are therefore entirely made out of PTFE.

Their rotary motion is produced from the reaction forces of their solid stream water jets, which are arranged in such a way that the inner tank surface is thoroughly covered when the head rotor is in motion.

The simple design, a two-piece construction, assures for long, maintenance free service.

The wide range of capacities and the choice among several spray patterns makes it easy to find the right product to suite a variety of different applications.

The codes shown in the capacity table refer to BSP threads. Our offices can supply coding for products designed with NPT threads.

Materials E1 PTFE (FDA approved)

LT 95° C

LP 4.0 bar

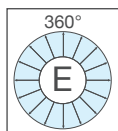
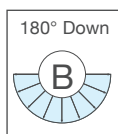
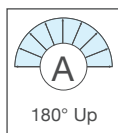
Coverage code

UBB 0035 E1xG

- ↓
- A 180° up
- B 180° down
- E 360°

BSP Thread Connection

Code	RF poll	Capacity at different pressures					Size mm	
		1,5	2,0	2,5	3,0	3,5	H	D
UBB 0003 E1xG	1/2"	21,5	24,7	27,5	30,0	32,3	60	50
UBB 0004 E1xG	3/4"	22,9	26,3	29,3	32,0	34,5	70	60
UBB 0007 E1xG		50,2	57,6	64,1	70,0	75,4		
UBB 0012 E1xG		86,0	98,8	110	120	129		
UBB 0018 E1xG	1"	130	150	167	182	196	75	70
UBB 0020 E1xG		143	165	183	200	215		
UBB 0027 E1xG		197	225	252	275	296		
UBB 0035 E1xG	2"	255	292	325	355	382	110	125
UBB 0039 E1xG		283	325	362	395	425		
UBB 0049 E1xG		355	407	454	495	533		
UBB 0059 E1xG	3"	423	486	541	590	635	150	175
UBB 0069 E1xG		495	568	632	690	743		
UBB 0098 E1xG		706	811	902	985	1061		
UBB 0118 E1xG	3"	846	971	1081	1180	1271	150	175
UBB 0138 E1xG		979	1136	1264	1380	1486		



In order to obtain the complet code of the tank washing head, you need to change the "x" letter, in second to last position, with the corresponding letter concerning the spray coverage, among the ones available.