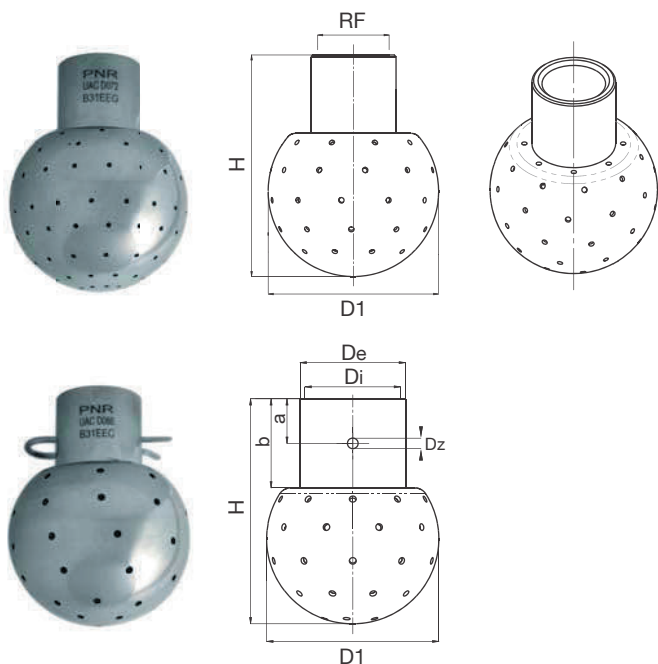


**FIXED SPRAY HEADS**

**FIXED SPRAY HEADS**



**UAC**

UAC fixed spray heads are a simple, fast and efficient device for cleaning the inside of small size tanks where a simple rinsing action is required.

Because of the relatively high washing fluid flow rate, they are usually operated at low pressures and can achieve a limited impact action on the tank wall.

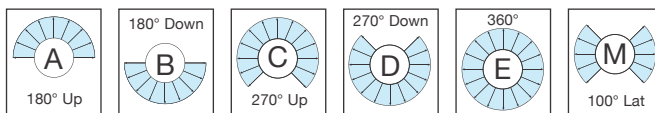
Their simple design allows for the head to be easily cleaned after being operated, which makes it possible to leave the heads permanently in place ready for use.

The values for wetting radiuses shown at the right of the table have been obtained operating the heads with a water pressure value of 1 bar.

On request, heads with electropolishing Ra < 0,8 are available, in order to have roughness for alimentary applications.

**Materials** B31 AISI 316L s.s.  
L8 Hastelloy C267 (on request)  
H1 Titanium Gr2 (on request)

**Connection** female thread (BSPP - BSPT - NPT); clip-on; welded.



Series		Size available (mm)					Capacity code	Mat.	Code					Thread dimension		Connection				Capacity at different pressures (bar)					WR			
D1	H	A	B	C	D	E			Spray coverage	RF (poll)		Clip / Welded	Threaded		Clip-on	Welded	0,5	1,0	1,0	2,0	3,0							
(Clip)	a	b	Dz	180° up	180° down	270° up	270° down	360°		100° lat	1/8"		1/4"	3/8"								1/2"	3/4"	1"	1-1/4"	BSPP	NPT	l/min
UAC							012	B31	A	B	C	D	E	M				G	N	C	W	14,0	1,20	20,0	28,0	35,0	0,5	
UAC		A					014	B31	A	B	C	D	E	M	A			G	N	C	W	16,0	1,40	23,3	33,0	40,0	0,8	
UAC							018	B31	A	B	C	D	E	M				G	N	C	W	21,0	1,80	30,0	42,0	54,0	0,8	
UAC							021	B31	A	B	C	D	E	M				G	N	C	W	25,0	2,10	35,0	50,0	61,0	1,0	
UAC							031	B31	A	B	C	D	E	M				G	N	C	W	37,0	3,10	51,7	73,0	90,0	1,1	
UAC							038	B31	A	B	C	D	E	M		B		G	N	C	W	45,0	3,80	63,3	90,0	110	1,2	
UAC							047	B31	A	B	C	D	E	M				G	N	C	W	55,0	4,70	78,3	111	136	0,9	
UAC							054	B31	A	B	C	D	E	M			C		G	N	C	W	64,0	5,40	90,0	127	156	1,0
UAC							063	B31	A	B	C	D	E	M				G	N	C	W	74,0	6,30	105	149	182	1,2	
UAC							072	B31	A	B	C	D	E	M				G	N	C	W	85,0	7,20	120	170	208	1,3	
UAC							078	B31	A	B	C	D	E	M				G	N	C	W	92,0	7,80	130	184	225	1,5	
UAC							086	B31	A	B	C	D	E	M				G	N	C	W	101	8,60	143	203	248	1,6	
UAC							092	B31	A	B	C	D	E	M				G	N	C	W	108	9,20	153	217	266	1,6	
UAC							102	B31	A	B	C	D	E	M				G	N	C	W	120	10,2	170	240	295	1,7	
UAC							110	B31	A	B	C	D	E	M				G	N	C	W	130	11,0	183	250	318	1,8	
UAC							123	B31	A	B	C	D	E	M				G	N	C	W	145	12,3	205	290	355	1,8	
UAC							132	B31	A	B	C	D	E	M				G	N	C	W	155	13,2	220	310	381	1,9	
UAC							157	B31	A	B	C	D	E	M				G	N	C	W	185	15,7	262	370	453	2,0	
UAC							160	B31	A	B	C	D	E	M				G	N	C	W	190	16,0	267	277	462	2,0	
UAC							175	B31	A	B	C	D	E	M				G	N	C	W	207	17,5	292	413	505	2,1	
UAC							209	B31	A	B	C	D	E	M				G	N	C	W	246	20,9	348	492	603	2,4	
UAC							217	B31	A	B	C	D	E	M				G	N	C	W	256	21,7	362	512	627	2,5	
UAC							228	B31	A	B	C	D	E	M				G	N	C	W	270	22,8	380	537	660	2,7	
UAC							242	B31	A	B	C	D	E	M				G	N	C	W	285	24,2	403	570	700	2,8	
UAC							286	B31	A	B	C	D	E	M				G	N	C	W	337	28,6	477	675	825	3,0	
UAC							321	B31	A	B	C	D	E	M				G	N	C	W	380	32,1	535	755	925	3,1	
UAC							371	B31	A	B	C	D	E	M				G	N	C	W	437	37,1	618	875	1070	3,2	
UAC							431	B31	A	B	C	D	E	M				G	N	C	W	510	43,1	718	1015	1245	3,4	
UAC							491	B31	A	B	C	D	E	M				G	N	C	W	580	49,1	818	1160	1412	3,5	

See tables "Clip-on and welded connection size" for De x Di (mm) size available.

## FIXED SPRAY HEADS

UAC

FIXED SPRAY HEADS

### HOW TO CREATE THE COMPLETE CODE

Series	Size available (mm)					Capacity code	Mat.	Code							Capacity at different pressures (bar)					WR												
	(clip)	D1	A	B	C			D	E	Spray coverage							Thread dimension		Connection													
										180° up	180° down	270° up	270° down	360°	100° lat	RF (poll)		Threaded			Clip-on	Welded	0,5	1,0	1,0	2,0	3,0					
H	a	b	a	b	a	b	a	b	a	b	a	b	a	b	a	b	a	b	a	b	a	b	a	b	a	b						
UAC	30	40	50	65	90		AISI 316L	180° up	180° down	270° up	270° down	360°	100° lat	1/8"	1/4"	3/8"	1/2"	3/4"	1"	1-1/4"	Clip / Welded	BSPP	BSPT	NPT	Clip-on	Welded	74,0	6,3	105	149	182	1,2
UAC	40	53	65	85	110	063	B31	A	B	C	D	E	M	1/8"	1/4"	3/8"	1/2"	3/4"	1"	1-1/4"	G	B	N	C	W	85,0	7,2	120	170	208	1,3	
UAC	16	21	23	30	38	072	B31	A	B	C	D	E	M	1/8"	1/4"	3/8"	1/2"	3/4"	1"	1-1/4"	G	B	N	C	W	92,0	7,8	130	184	225	1,5	
UAC	2,2	2,5	2,5	2,8	3,3	078	B31	A	B	C	D	E	M	1/8"	1/4"	3/8"	1/2"	3/4"	1"	1-1/4"	G	B	N	C	W	92,0	7,8	130	184	225	1,5	

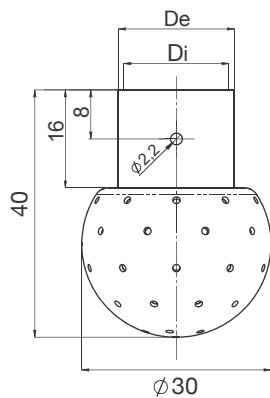
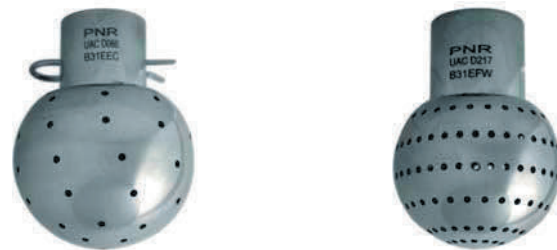
  

**Complete code**      **UAC C072 B31DEG**

Series \_\_\_\_\_ **UAC** \_\_\_\_\_ Fixed spray head  
 Size \_\_\_\_\_ **C** \_\_\_\_\_ Diameter 50 mm  
 Capacity code \_\_\_\_\_ **072** \_\_\_\_\_ 7,2 [m³/h] @ 1bar  
 Material \_\_\_\_\_ **B31** \_\_\_\_\_ AISI 316L  
 Spray coverage \_\_\_\_\_ **D** \_\_\_\_\_ 270° down  
 Thread dimension \_\_\_\_\_ **E** \_\_\_\_\_ 3/4"  
 Connection \_\_\_\_\_ **G** \_\_\_\_\_ BSPP

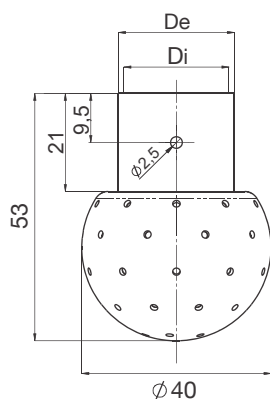
### Clip-on and welded connection size

PNR has standardized both clip-on and welded connection, in order to satisfy its customers. The standard reference is EN 10357, from which the connection dimensions have been extrapolated; moreover, we can guarantee the connection with every pipe whose thickness has standard values. In the following tables, you can find the main dimension.



Type A - Ø 30 mm

	CLIP-ON		WELDED	
	(Di x De) (sphere)	EN 10357 (pipe)	(Di x De) (sphere)	EN 10357 (pipe)
<b>A</b>	Ø20 x 18	/	/	/
<b>B</b>	Ø22 x 20	/	Ø13,7 x 9,2	DN6 1/4"
<b>C</b>	Ø14,5 x 12,5	DN10 range1	Ø17,1 x 12,48	DN10 3/8"
<b>D</b>	Ø15,5 x 13,5	DN10 range2	Ø12 x 10	DN10 range1
<b>E</b>	Ø20,5 x 18,5	DN15 range1	Ø13 x 10	DN10 range2
<b>F</b>	Ø16,2 x 14,2	DN6 1/4"	Ø18 x 16	DN15 range1
<b>G</b>	Ø19,6 x 17,6	DN10 3/8"	Ø19 x 16	DN15 range2



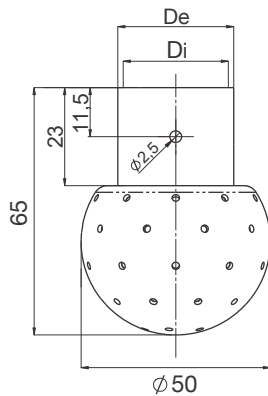
Type B - Ø 40 mm

	CLIP-ON		WELDED	
	(Di x De) (sphere)	EN 10357 (pipe)	(Di x De) (sphere)	EN 10357 (pipe)
<b>A</b>	Ø20 x 18	/	Ø18 x 16	DN 15 range1
<b>B</b>	Ø22 x 20	/	Ø19 x 16	DN 15 range2
<b>C</b>	Ø24,5 x 22,5	DN 20 range1	Ø1 7,1 x 12,4	DN10 3/8"
<b>D</b>	Ø25,5 x 23,5	DN 20 range2	Ø21,3 x 15,8	DN 15 1/2"
<b>E</b>	Ø16,2 x 14,2	DN6 1/4"	Ø22 x 20	DN 20 range1
<b>F</b>	Ø19,6 x 17,6	DN10 3/8"	Ø23 x 20	DN 20 range2
<b>G</b>	Ø23,8 x 21,8	DN 15 1/2"	Ø25.4 x 22,2	/

## FIXED SPRAY HEADS

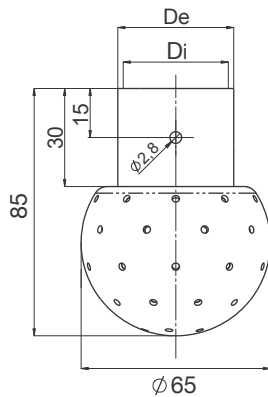
## FIXED SPRAY HEADS

UAC



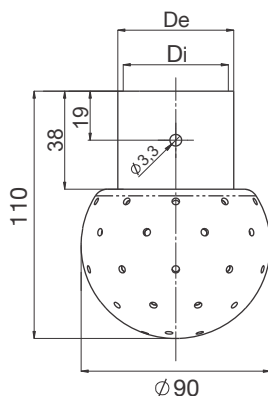
Type C - Ø 50 mm

	CLIP-ON		WELDED	
	(Di x De) (sphere)	EN 10357 (pipe)	(Di x De) (sphere)	EN 10357 (pipe)
<b>A</b>	Ø24,5 x 22,5	DN 20 range1	Ø22 x 20	DN 20 range1
<b>B</b>	Ø25,5 x 23,5	DN 20 range2	Ø23 x 20	DN 20 range2
<b>C</b>	Ø23,8 x 21,8	DN 15 1/2"	Ø21,3 x 15,8	DN 15 1/2"
<b>D</b>	Ø28 x 26	/	Ø26,7 x 20,9	DN 20 3/4"
<b>E</b>	Ø30,2 x 28,2	DN 20 3/4"	Ø28 x 26	DN 25 range1
<b>F</b>			Ø29 x 26	DN 25 range2
<b>G</b>			Ø25,4 x 22,2	/



Type D - Ø 65 mm

	CLIP-ON		WELDED	
	(Di x De) (sphere)	EN 10357 (pipe)	(Di x De) (sphere)	EN 10357 (pipe)
<b>A</b>	Ø30,5 x 28,5	DN 25 range1	Ø28 x 26	DN 25 range1
<b>B</b>	Ø31,5 x 29,5	DN 25 range2	Ø29 x 26	DN 25 range2
<b>C</b>	Ø36,5 x 34,5	DN 32 range1	Ø34 x 32	DN 32 range1
<b>D</b>	Ø28 x 26	/	Ø35 x 32	DN 32 range2
<b>E</b>	Ø32 x 30	/	Ø26,7 x 20,9	DN 20 3/4"
<b>F</b>	Ø38 x 36	/	Ø33,4 x 26,6	DN 25 1"
<b>G</b>	Ø37,5 x 35,5	DN 32 range2	Ø40 x 28	DN 40 range1
<b>H</b>	Ø42,5 x 40,5	DN 40 range1	Ø41 x 28	DN 40 range2
<b>I</b>	Ø29,2 x 27,2	DN 20 3/4"		
<b>J</b>	Ø35,9 x 33,9	DN 25 1"		



Type E - Ø 90 mm

	CLIP-ON		WELDED	
	(Di x De) (sphere)	EN 10357 (pipe)	(Di x De) (sphere)	EN 10357 (pipe)
<b>A</b>	Ø36,5 x 34,5	DN 32 range1	Ø34 x 32	DN 32 range1
<b>B</b>	Ø37,5 x 35,5	DN 32 range2	Ø35 x 32	DN 32 range2
<b>C</b>	Ø42,5 x 40,5	DN 40 range1	Ø40 x 38	DN 40 range1
<b>D</b>	Ø43,5 x 41,5	DN 40 range2	Ø41 x 38	DN 40 range2
<b>E</b>	Ø32 x 30	/	Ø52 x 50	DN 50 range1
<b>F</b>	Ø38 x 36	/	Ø33,4 x 26,6	DN 25 1"
<b>G</b>	Ø54,5 x 52,5	DN 50 range1	Ø42,2 x 35	DN 32 1" 1/4
<b>H</b>	Ø55,5 x 53,5	DN 50 range2	Ø48,2 x 40,9	DN 40 1" 1/2
<b>I</b>	Ø35,9 x 33,9	DN 25 1"	Ø60,3 x 52,5	DN 50 2"
<b>J</b>	Ø44,7 x 42,7	DN 32 1" 1/4	Ø53 x 50	DN 50 range2
<b>K</b>	Ø50,8 x 48,8	DN 40 1" 1/2	Ø38,1 x 34,9	/
<b>L</b>	Ø62,8 x 60,8	DN 50 2"		