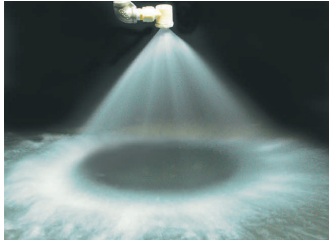
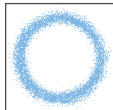


MOULDED PLASTIC NOZZLES

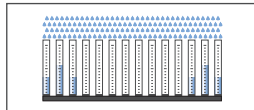
PN/PO series hollow cone nozzles made by plastic moulding, offer a high chemical resistance and low prices. They are tangential nozzles and produce a hollow cone spray of atomized droplets. As they have a large free passage and no swirling vane inside their body, they are highly clog-resistant. PN/PO nozzles are efficient, cost-effective and widely used in many processing lines. Moreover, they can be easily assembled in large quantity onto pipe manifolds.



- **Thread specification**
PO: Male BSPT, NPT
PN: Female BSP, NPT
PS: Quick-fit
- **Max operation temperature:**
100 °C
- **Max operation pressure:**
10 bar

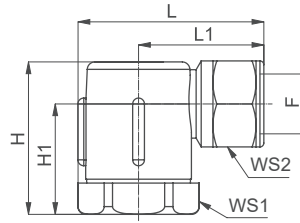


Spray section

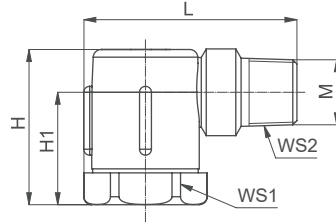


Concave distribution

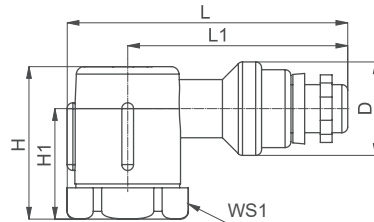
Codice	Conn.	L	L1	H	H1	CH1	CH2	D
		mm	mm	mm	mm			
PN	3/8" F	47.5	32.0	39.0	28.0	28	22	---
	1/2" F	51.5	36.0	39.0	28.0	28	24	---
PO	3/8" M	53.5	38.0	39.0	28.0	28	---	---
PS	Att. rapido	71.5	56.0	39.0	28.0	28	---	24.0



PN - Female



PO - Male



PS - Quick-fit

HOLLOW CONE NOZZLES

PNx Female	POx Male	PSx Quick-fit	Code	Thread	Capacity at different pressure values (l/min) (bar)							
					0.5	0.7	1.0	2.0	3.0	5.0	7.0	10
•	•	•	1170	3/8" Quick-fit	0.69	0.82	0.98	1.39	1.70	2.19	2.60	3.10
•	•	•	1390		1.59	1.88	2.25	3.18	3.90	5.03	5.96	7.12
•	•	•	1460		1.88	2.22	2.66	3.76	4.60	5.94	7.03	8.40
•	•	•	1570		2.33	2.75	3.29	4.65	5.70	7.36	8.71	10.4
•	•	•	1670		2.74	3.24	3.87	5.47	6.70	8.65	10.2	12.2
•	•	•	1850		3.47	4.11	4.91	6.94	8.50	11.0	13.0	15.5
•	•	•	1980		4.00	4.73	5.66	8.00	9.80	12.7	15.0	17.9
•	•	•	2115		4.69	5.56	6.64	9.39	11.5	14.8	17.6	21.0
•	•	•	2128		5.23	6.18	7.39	10.5	12.8	16.5	19.6	23.4
•	•	•	2208		8.49	10.0	12.0	17.0	20.8	26.9	31.8	38.0
•	•	•	2220	8.98	10.6	12.7	18.0	22.0	28.4	33.6	40.2	
•			2129	1/2"	5.23	6.18	7.39	10.5	12.8	16.5	19.6	23.4
•			2209		8.49	10.0	12.0	17.0	20.8	26.9	31.8	38.0
•			2221		8.98	10.6	12.7	18.0	22.0	28.4	33.6	40.2
•			2320		13.1	15.5	18.5	26.1	32.0	41.3	48.9	58.4
•			2420		17.1	20.3	24.2	34.3	42.0	54.2	64.2	76.6

PO MALE THREAD NOZZLES

ZPB fastening clamps in plastic usually connect to nozzles with 3/8" female threads. They are flexible, durable and low cost. Please see more on page 86.



PN (Female) + ZPB Plastic pipe clamp

TYPICAL APPLICATIONS

- Washing:** exhaust scrubbers, parts cleaning, pre-treatment in coating process, dust and foam control, filter spraying
- Cooling:** wire cooling, plastic pipe cooling
- Other applications:** humidification systems, etc.

HOW TO MAKE UP THE NOZZLE CODE

EX.: PNS 1170 D6

