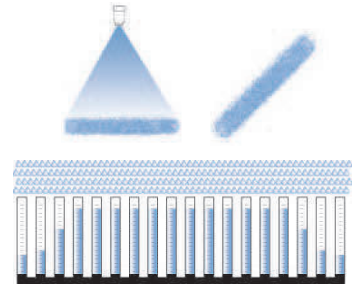
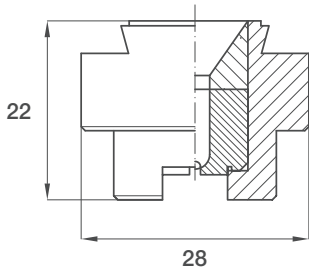
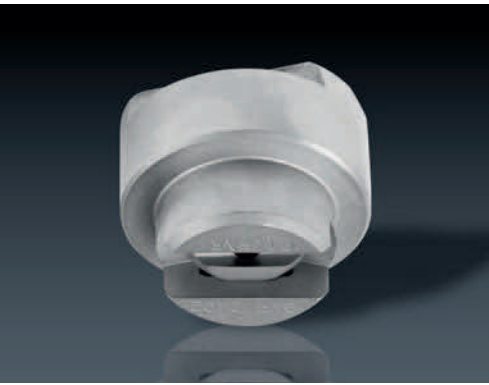


**DOVE TAIL NOZZLE TIPS**

The dove tail design of these nozzles allows for proper jet orientation onto the surface to be descaled. Welding nipples of various lengths allow for proper header manifold design.



**MATERIALS**

<b>B1</b>	Body	Stainless steel AISI 303
<b>C1</b>	Insert	Stainless steel AISI 420 hardened
<b>F1</b>	Insert	Tungsten carbide

**HOW TO ORDER PNR PRODUCTS**

Model	Thread	Capacity	Material
<b>GW</b>	<b>C</b>	<b>2162</b>	<b>XX</b>

Order example: **GWC 2162 C1**

**SPRAY ANGLE CODES**

GWC	GWE	GWF	GWL
22°	26°	30°	40°

See list of abbreviations - legenda at page 3.

Code	D	D1	Capacity - lpm								
			Pressure - bar								
			80	90	100	120	140	160	180	200	
2162xx	2.0	1.5	16.2	17.1	18.0	19.5	21.3	22.8	24.0	25.0	
2208xx	2.1	1.8	20.8	21.8	23.0	25.2	27.2	29.1	30.8	35.5	
2250xx	2.5	1.9	25.0	26.5	28.0	31.0	33.0	35.4	37.5	39.0	
2320xx	2.8	2.4	32.0	34.2	36.0	39.4	42.6	45.5	48.3	50.9	
2402xx	3.0	2.5	40.2	42.7	45.0	49.0	53.0	57.0	60.0	63.0	
2520xx	3.5	2.7	52.0	55.0	58.0	63.5	68.6	73.3	77.8	82.0	
2642xx	3.8	3.2	64.2	68.3	72.0	78.0	85.0	91.0	96.0	101	
2798xx	4.3	3.6	79.8	84.4	89.0	98.0	105	112	119	126	
2996xx	4.7	4.0	99.6	106	112	122	132	141	150	158	
3112xx	5.0	4.2	112	119	125	137	148	158	168	177	
3120xx	5.2	4.4	120	127	134	147	158	169	180	189	

**CONVERSION TABLE (UE - USA)**

<b>PRESSURE: 1 bar = 14,5 psi</b>
<b>CAPACITY: 1 lpm = 0,264 gpm</b>



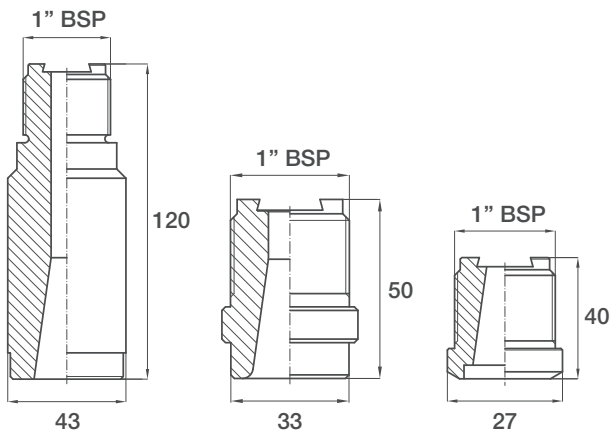
**ZB NIPPLES**

The ZB series welding nipples are designed to assemble the descaling nozzle tips type GW on the main header manifolds.

Their dove tail coupling, machined with high precision, ensures the perfect alignment of the tip and therefore of the spray according to the manifold project design.

The contact surface between the tip collar and the nipple is machined with a high level of finish to prevent losses under pressure.

The ZB nipples are produced in three different lengths to allow various distances between nipple and sheet.



**MATERIALS**

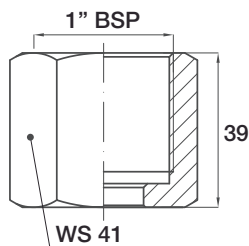
<b>B31</b>	Stainless steel AISI 316L
------------	---------------------------

Code	RG inch	L mm	Weight kg
ZBB 0100 B3	1	40	0.18
ZBC 0100 B3	1	120	0.90
ZBD 0100 B3	1	50	0.22



**VAA 1001 B1B**

The lock nut VAA 1001 B1B cap is specifically designed to obtain a safe coupling between the descaling tips type GW and the ZB series nipples at the high working pressures.



**MATERIALS**

<b>B1</b>	Stainless steel AISI 303
-----------	--------------------------